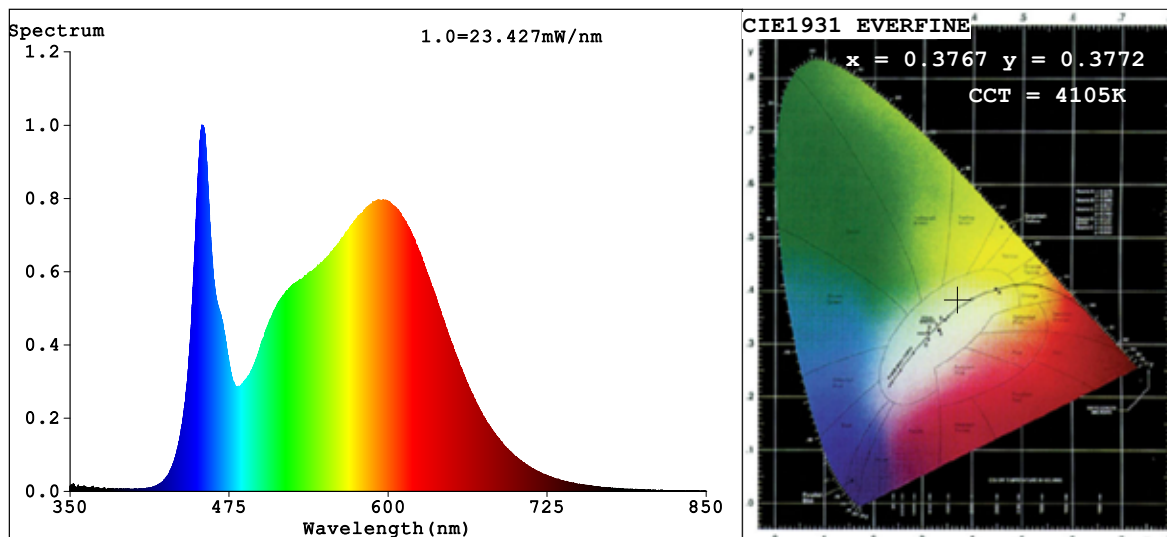


## Spectrum Test Report



### Color Parameters:

Chromaticity Coordinate:  $x=0.3767$   $y=0.3772$   $u'=0.2225$   $v'=0.5012$   
 CCT=4105K(Duv=0.0013) Dominant WL:Ld =577.9nm Purity=26.2%  
 Ratio:R=18.2% G=77.7% B=4.1%; Peak WL:Lp=453.6nm FWHM=20.8nm  
 Render Index:Ra=84.6 CRI=78.5 TM30:Rf=83 Rg=94  
 R1 =84 R2 =92 R3 =96 R4 =82 R5 =83 R6 =89 R7 =86  
 R8 =66 R9 =14 R10=81 R11=82 R12=61 R13=86 R14=99 R15=77

### Photo Parameters:

Flux = 1082 lm Eff. : 105.64 lm/W Fe = 3.303 W

### Electrical parameters:

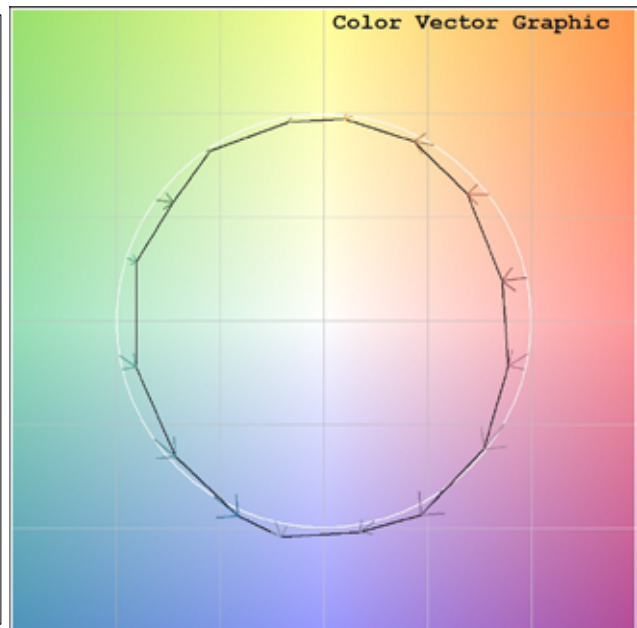
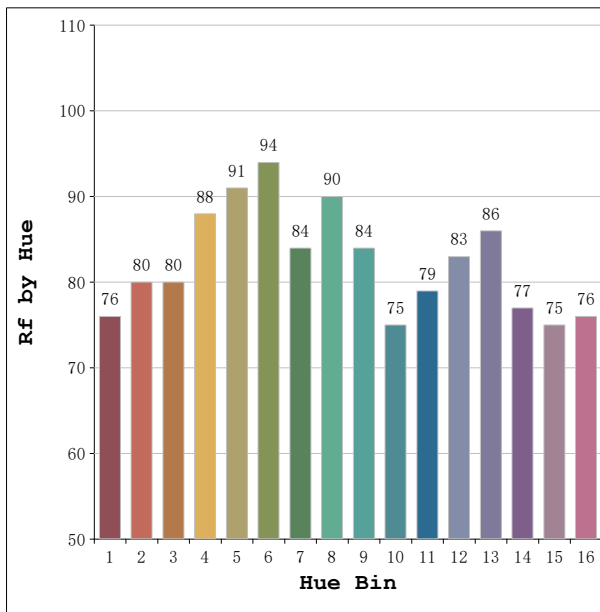
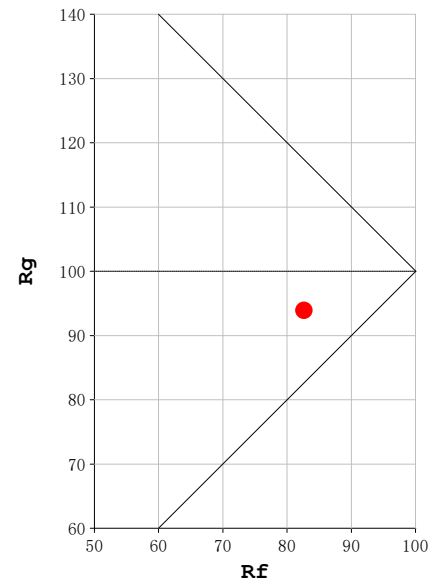
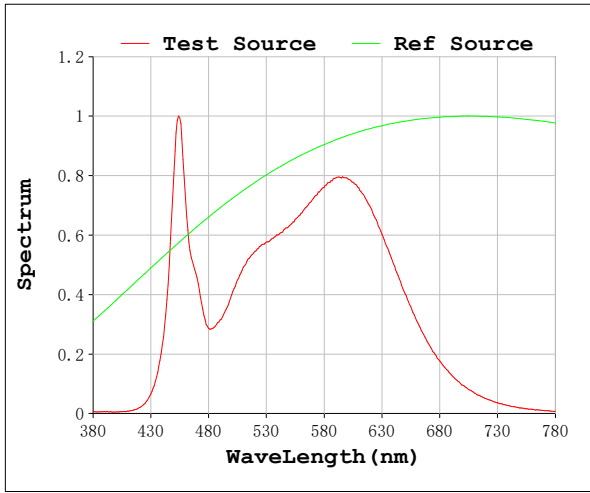
V = 23.998 V I = 0.4269 A P = 10.24 W PF = 1.000

Status: Integral T = 1250 ms Ip = 46086 (70%)

Model:Ecoled Vizaya 4000  
 Tester:Sergio Carneros  
 Temperature:27Deg  
 Manufacturer:Luz Negra S.L.

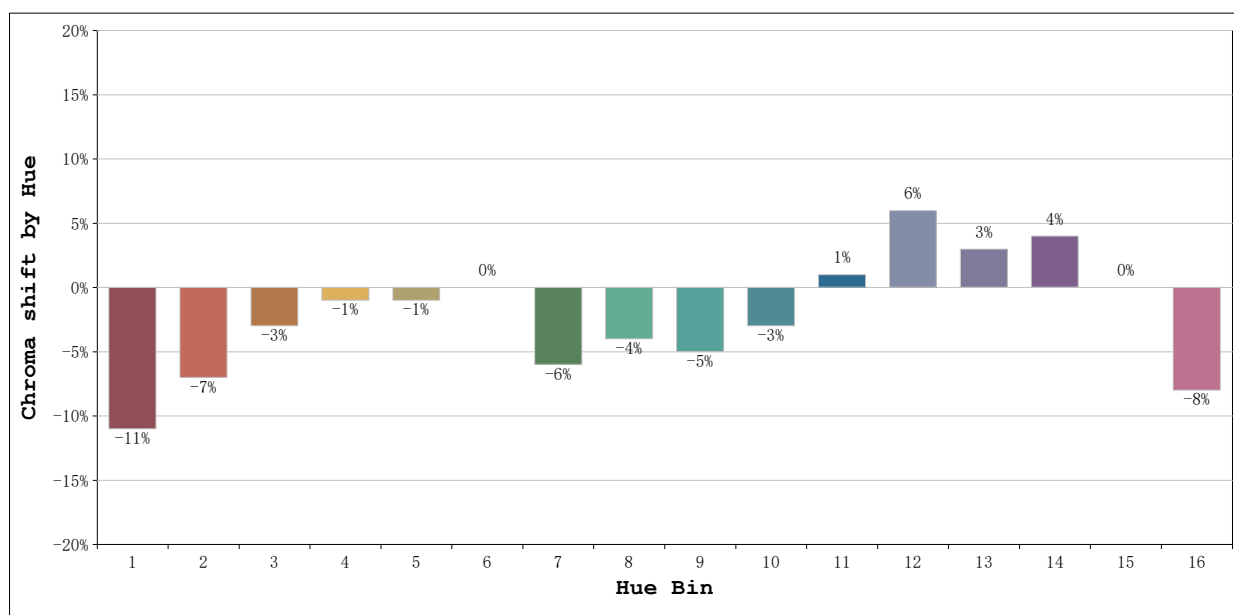
Number: 32.226  
 Date:2026-06-02 08:21:09  
 Humidity:35%  
 Remarks:100cm de tira flexible

Rf: 83 CCT: 4105 K u': 0.2225  
Rg: 94 Duv: 0.0013 v': 0.5012



Model:Ecoled Vizaya 4000  
Tester:Sergio Carneros  
Temperature:27Deg  
Manufacturer:Luz Negra S.L.

Number: 32.226  
Date:2026-06-02 08:21:09  
Humidity:35%  
Remarks:100cm de tira flexible



			Graphic shift(%)	
Hue Bin	Hue Angle	Rf	Chroma	Hue
1	0.0° - 22.5°	76	-11	1
2	22.5° - 45.0°	80	-7	6
3	45.0° - 67.5°	80	-3	9
4	67.5° - 90.0°	88	-1	4
5	90.0° - 112.5°	91	-1	2
6	112.5° - 135.0°	94	0	-1
7	135.0° - 157.5°	84	-6	-2
8	157.5° - 180.0°	90	-4	1
9	180.0° - 202.5°	84	-5	7
10	202.5° - 225.0°	75	-3	13
11	225.0° - 247.5°	79	1	15
12	247.5° - 270.0°	83	6	4
13	270.0° - 292.5°	86	3	-7
14	292.5° - 315.0°	77	4	-14
15	315.0° - 337.5°	75	0	-14
16	337.5° - 360.0°	76	-8	-7

Model:Ecoled Vizaya 4000  
Tester:Sergio Carneros  
Temperature:27Deg  
Manufacturer:Luz Negra S.L.

Number: 32.226  
Date:2026-06-02 08:21:09  
Humidity:35%  
Remarks:100cm de tira flexible